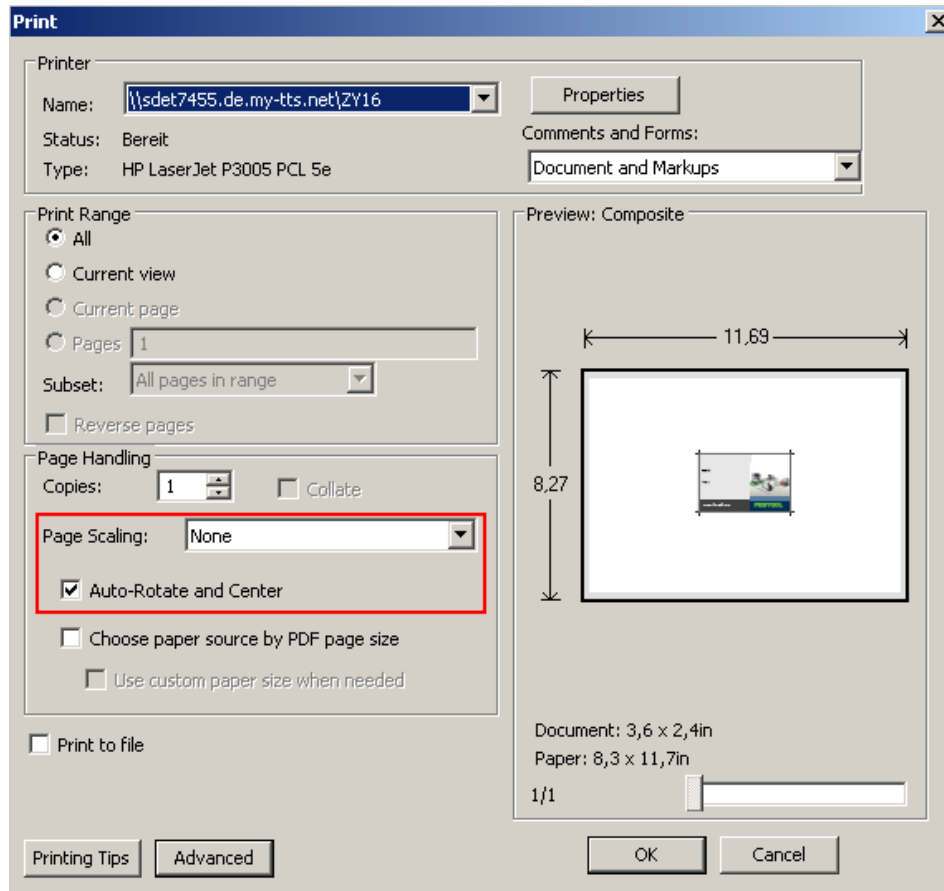


## Our recommendations for printing

### Printer settings

For printing your personalized label please click on the button „Print“ in your Adobe® Acrobat® Reader. The printer settings are getting opened.



Please check if all settings are marked as shown above. The “Page Scaling” should be “None” and the “Auto-Rotate and Center”-Option should be checked (see red box above). Then press on „OK“ and your printer will start printing.

### Printing and Application Tips

To get the best results please read carefully our advices:

1. You can use a much more stronger paper than normal. Take e.g. a grammage of 135 gr./m<sup>2</sup>. With that you will achieve a better result and the label will be much more stable.
2. Instead of using regular paper in A4, you can use smaller papers like A5/A6. With that you can save unmeant cuttings.
3. Please change your printer settings before printing to color mode to get a premium result.
4. Protect your personalized label with our new transparent covers for SYSTEMER T-LOC. The protective covers can be purchased at your local Festool dealer, order number: 497855
5. Save your personalized label to your local hard drive for a later re-usage.

